

WIRRAL COUNCIL

WIRRAL SCHOOLS FORUM - 29th APRIL 2015

REPORT OF THE DIRECTOR OF CHILDREN'S SERVICES

BENCHMARKING OF WIRRAL SCHOOL FUNDING FORMULA 2015-16

EXECUTIVE SUMMARY

This report provides details of the benchmarking of Wirral School Funding Formula 2015-16 compared to national data, statistical neighbours and North West local authorities.

BACKGROUND

The Schools Funding Formula is a means to allocate budgets to all maintained primary, secondary and academy schools in Wirral. The formula uses a range of prescribed factors set by the DfE, such as pupil numbers and deprivation elements to determine an individual budget for each school. The amount allocated to schools in 2015-16 was £186.7m in total. School budgets are funded from the ring-fenced Dedicated Schools Grant.

Each year, the DfE publish a dataset showing local authorities' formulae for allocating the schools block funding from the DSG. The purpose of this is to allow local authorities to compare and benchmark their formula against other local authorities.

Appendix 1 attached to this report shows how elements within Wirral's formula compare with national data, statistical neighbours and North West local authorities.

COMPARISONS

The reforms to school funding have moved a greater proportion of resources into pupil-led elements. Our current formula shows that 93% of funding is allocated through a combination of pupil-led factors, which has been the same percentage since the school funding reform in 2013-14. This places Wirral in the top 15% of local authorities with the highest percentage of funding through pupil-led factors and is also significantly in excess of the minimum 80% set by the DfE.

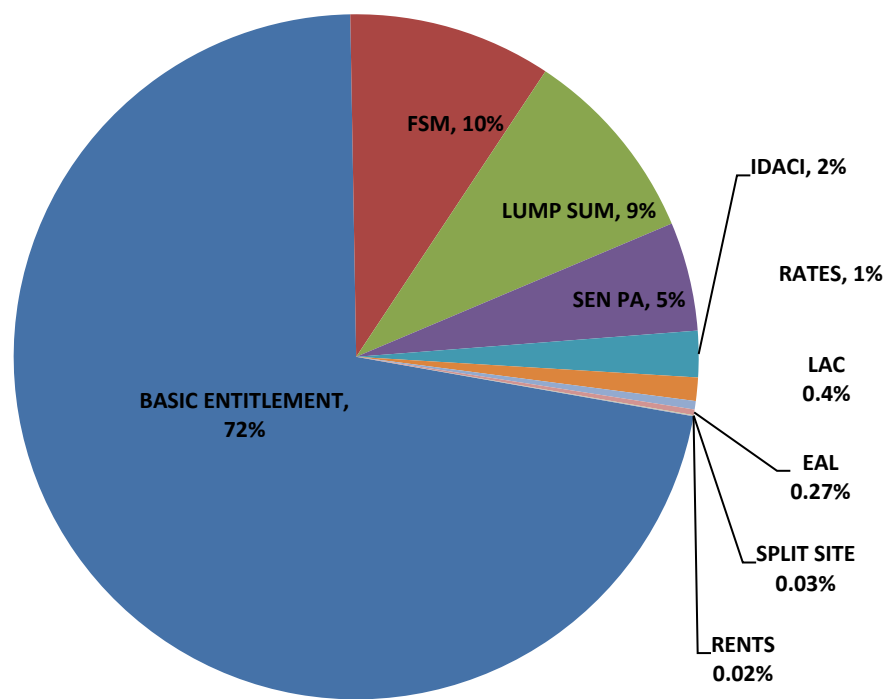
Pupil Entitlement (AWPU) at £2,778 for Primary and £3,944 for Secondary also fall in line with most authorities.

Generally it appears that Wirral's distribution of the Schools Block follows the general trend of other local authorities. This is also the case when compared to other local authorities in the North West.

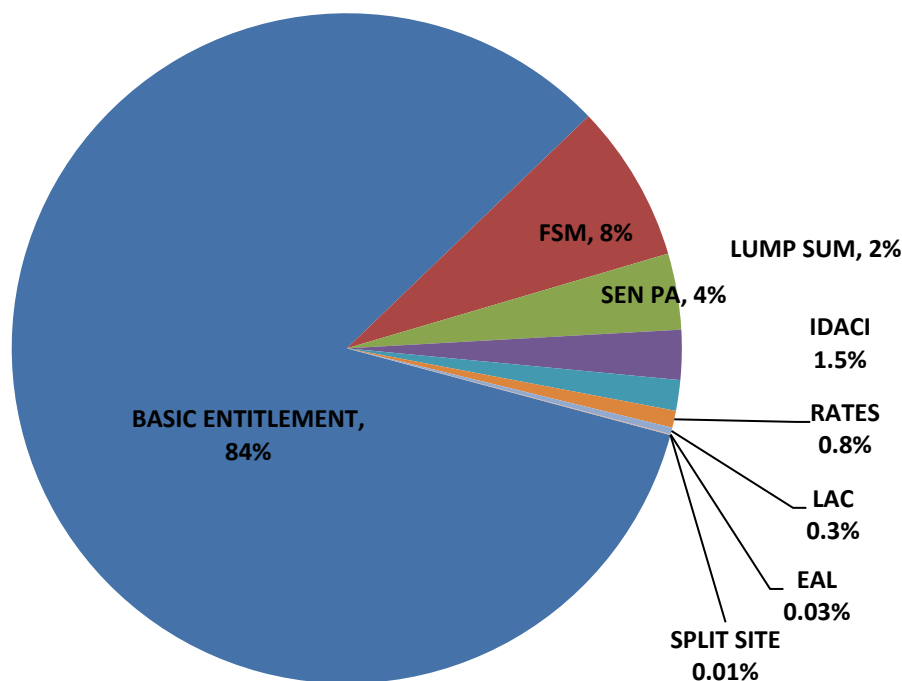
The charts overleaf give a breakdown of how much is allocated to each element in Wirral's formula.

Wirral Schools Funding Formula elements

Primary £97.1m



Secondary £89.6m

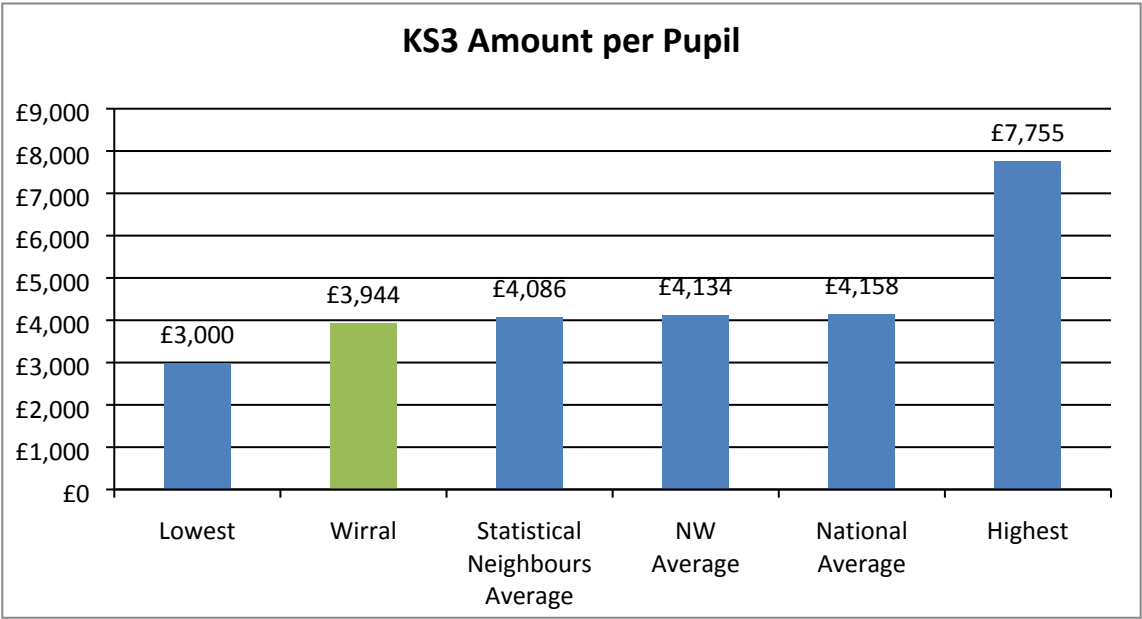
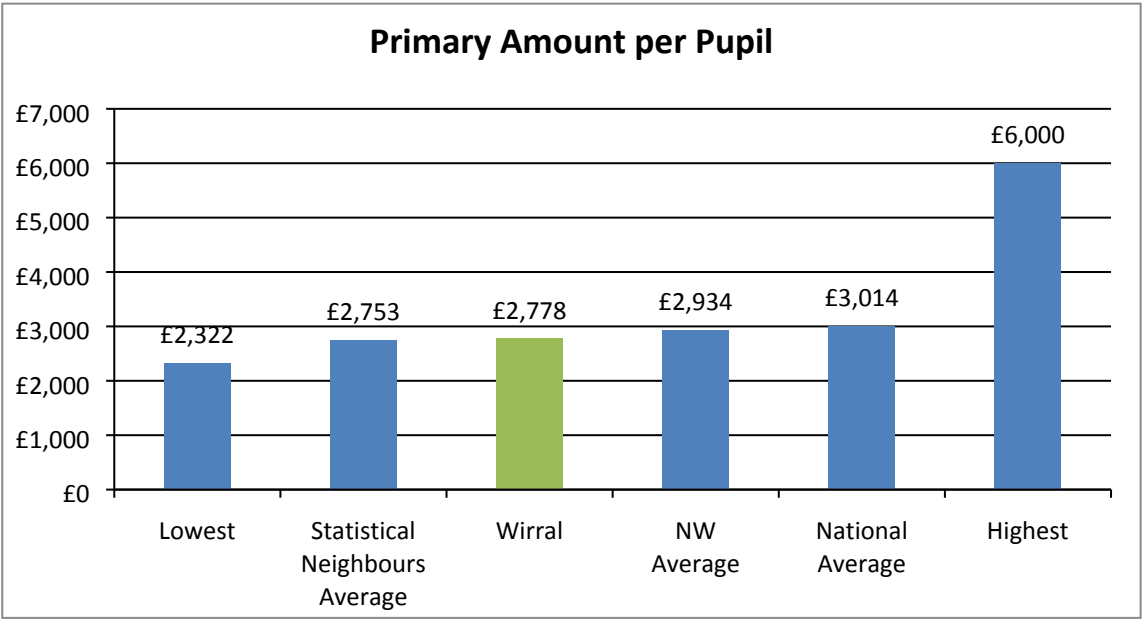


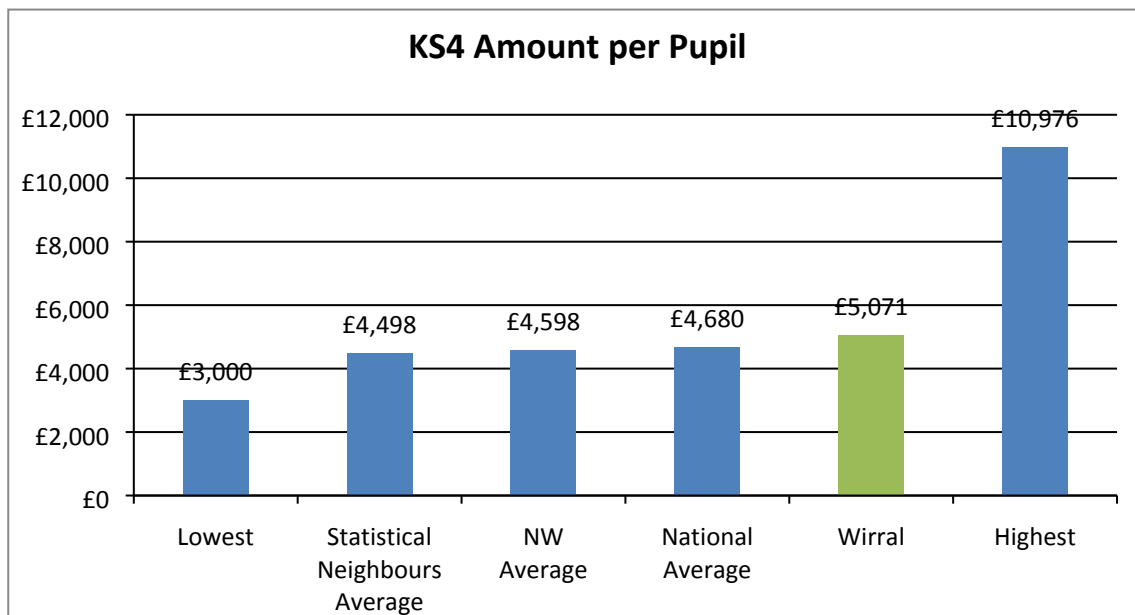
RECOMMENDATION

Schools Forum note the contents of the report.

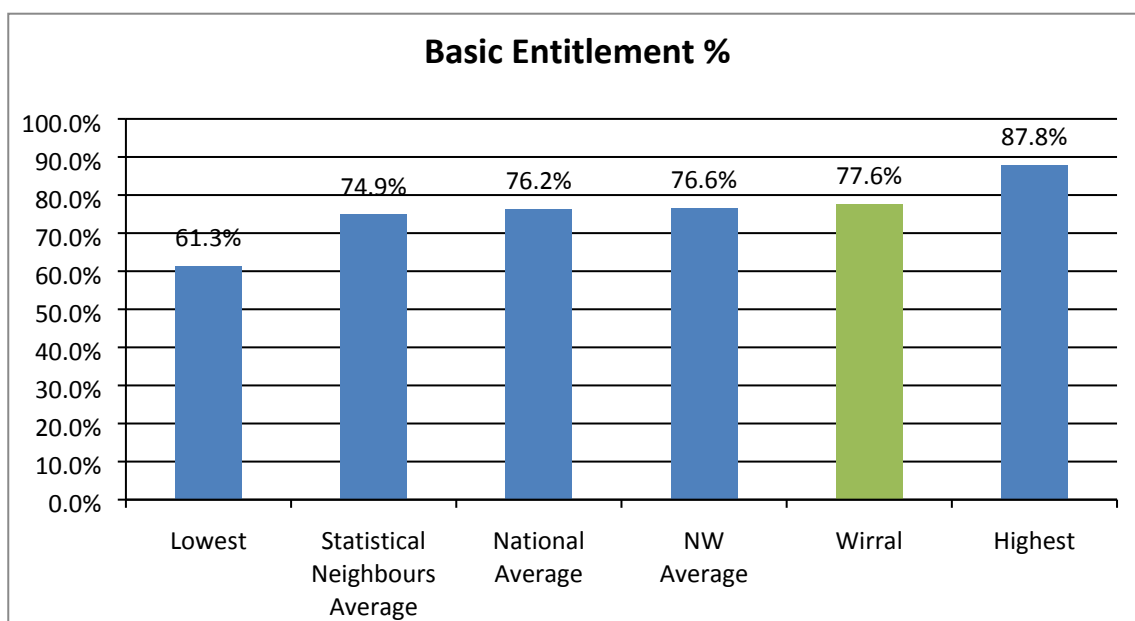
Julia Hassall
Director of Children’s Services

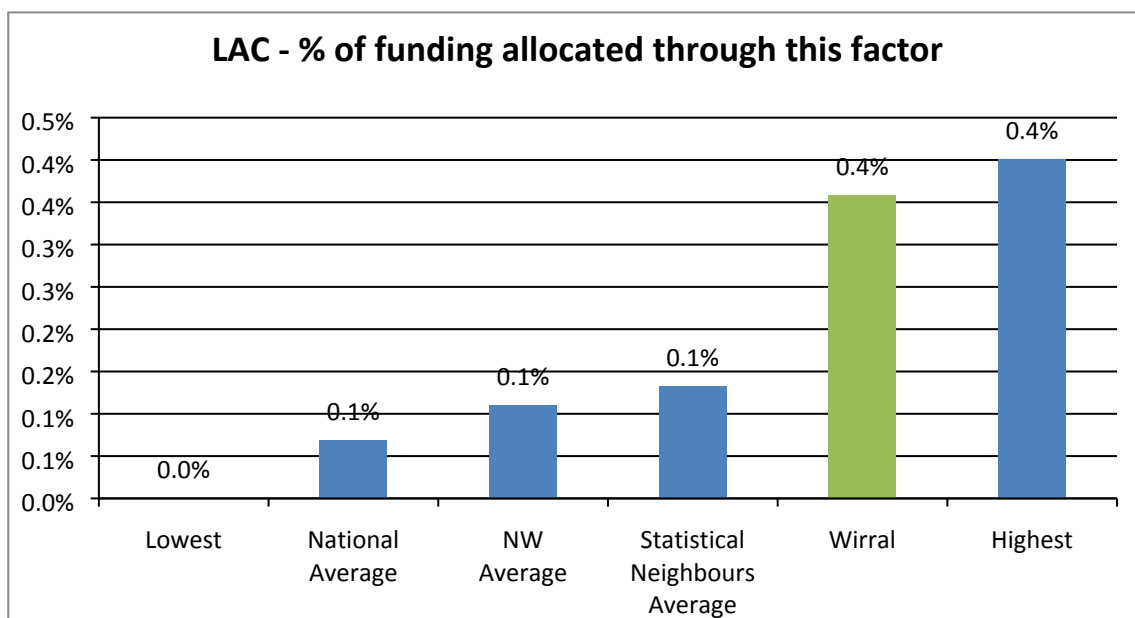
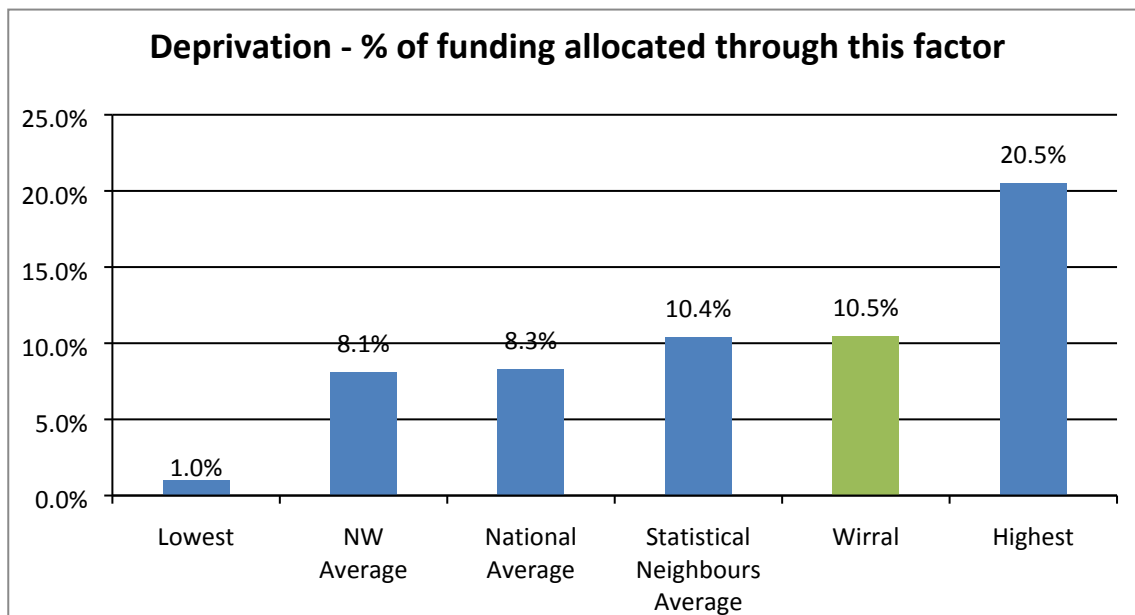
APPENDIX 1
BENCHMARKING OF 2015-16 WIRRAL SCHOOL FUNDING FORMULA





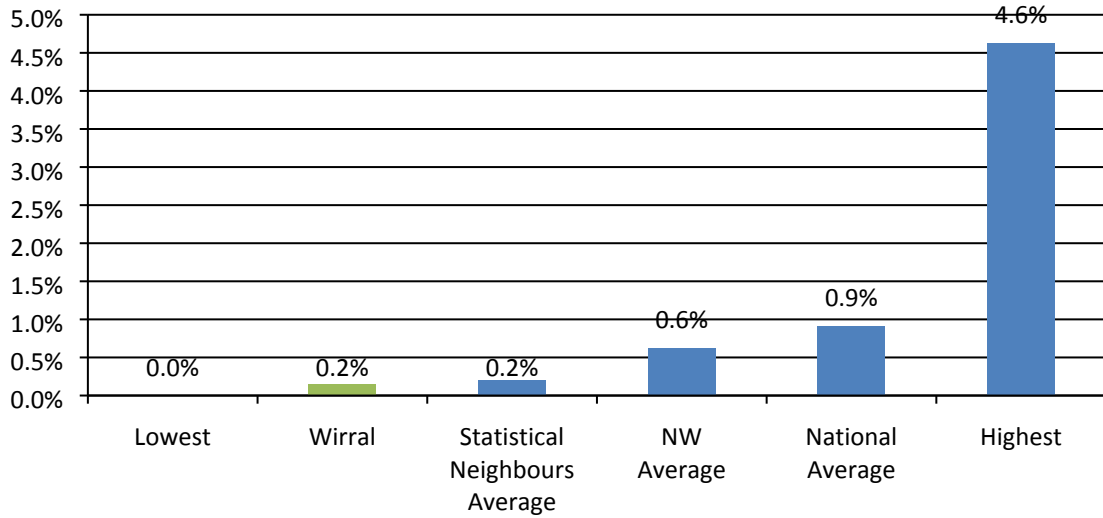
Schools were asked during consultation if they had any views about equalising the rates for KS3 and KS4 Pupil Entitlement in secondary schools. Schools supported the view that no action is taken at the time.



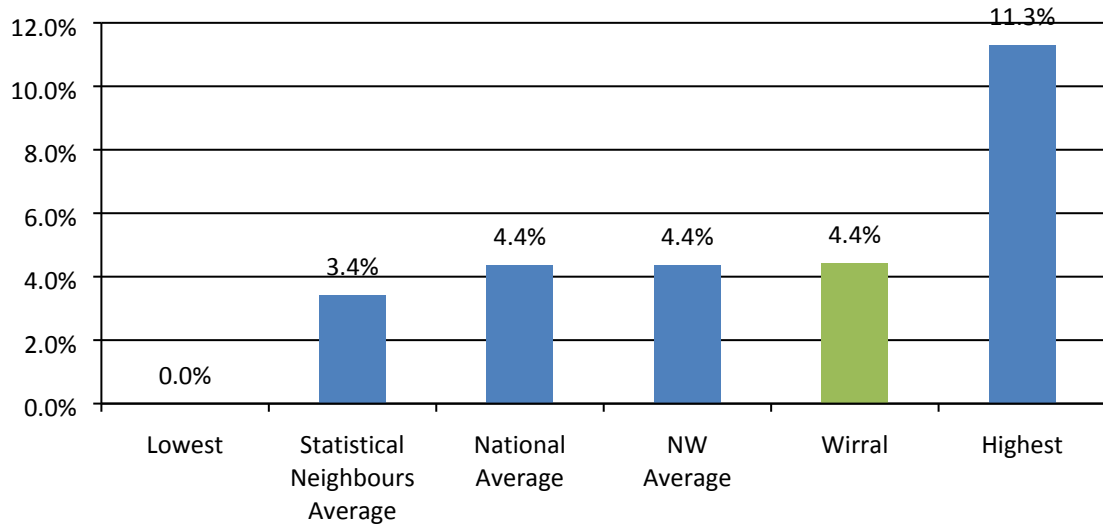


The proposal to equalise the level of funding for each looked after child to the average funding allocated for deprivation for 2015-16 was approved. An extra £225,000 from deprivation was redistributed to Looked After Children. This places Wirral in the top 10% of local authorities with the highest level of funding for looked after children.

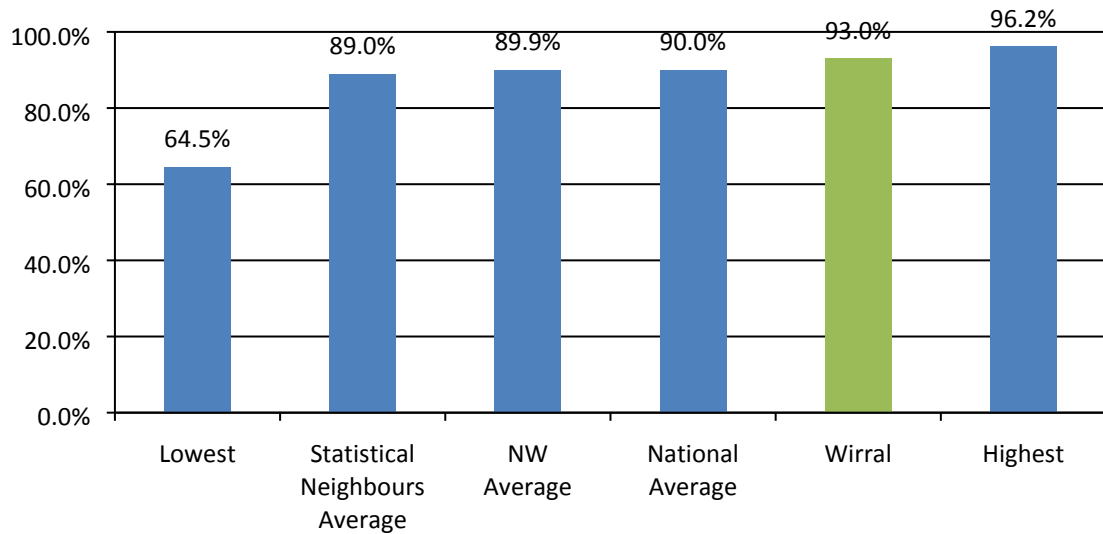
EAL - % of funding allocated through this factor



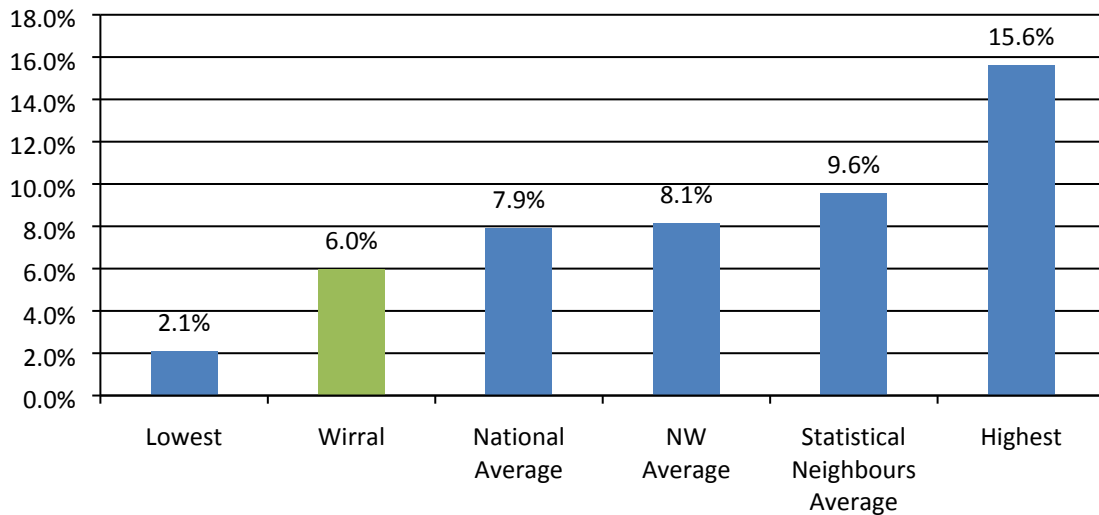
Prior Attainment - % of funding allocated through this factor



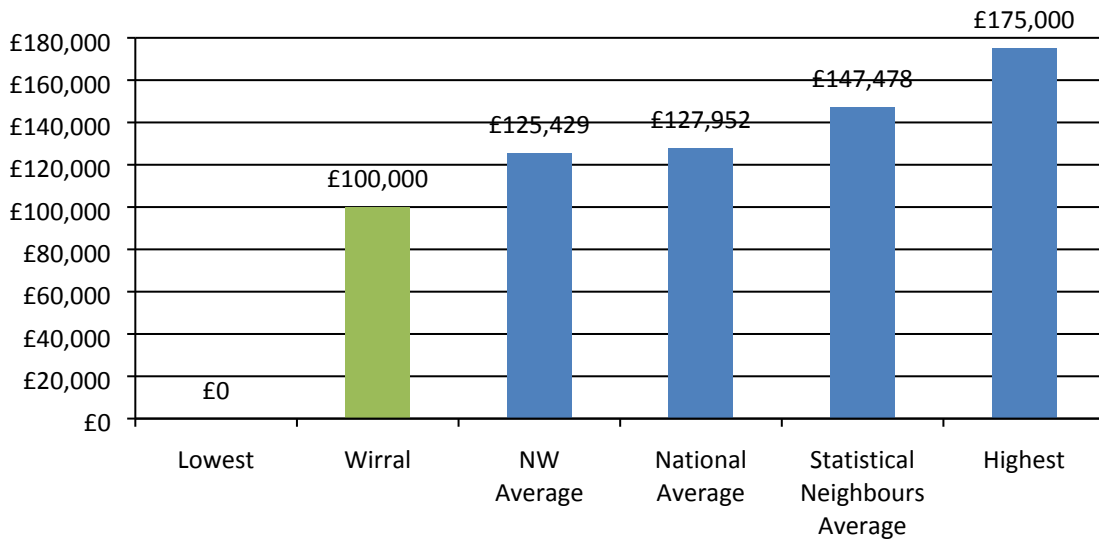
% of funding allocated through Pupil Led Factors



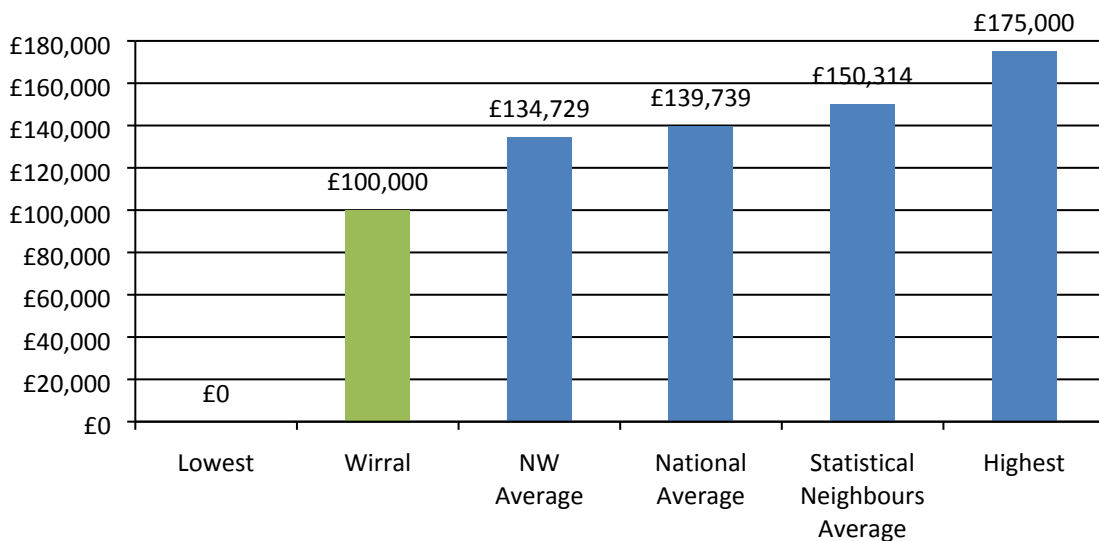
Lump Sum - % of funding allocated through this factor

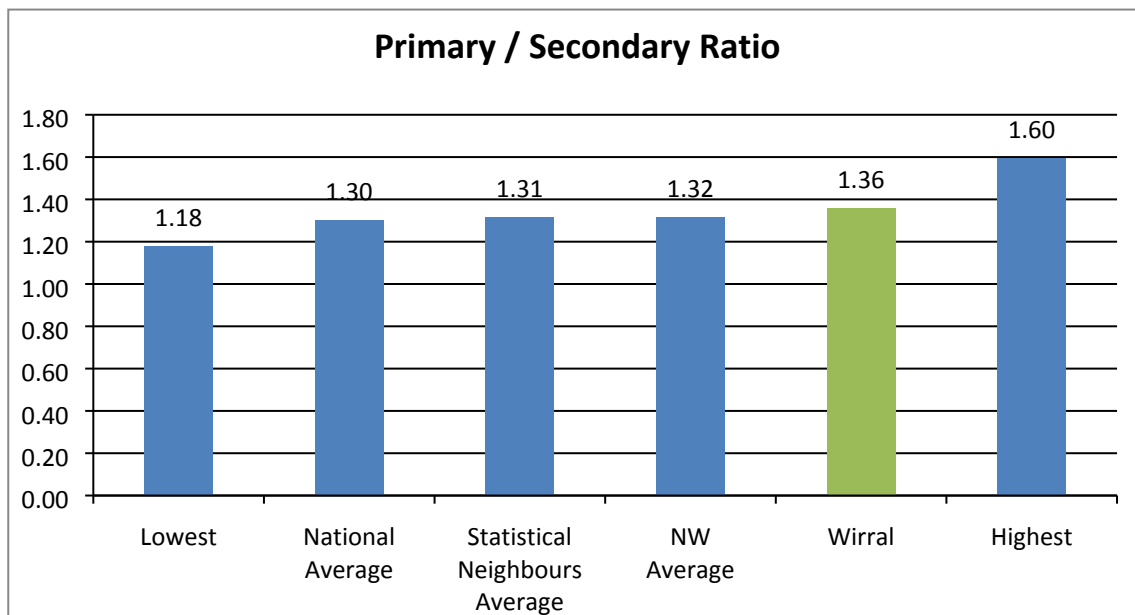


Lump Sum - Primary



Lump Sum - Secondary





NW LAs used in benchmarking

Blackburn with Darwen
 Blackpool
 Bolton
 Bury
 Cheshire East
 Cheshire West & Chester
 Cumbria
 Halton
 Knowsley
 Lancashire
 Liverpool
 Manchester
 Oldham
 Rochdale
 Salford
 Sefton
 St Helens
 Stockport
 Tameside
 Trafford
 Warrington
 Wigan
 Wirral

Statistical Neighbours used in benchmarking

Darlington
 Halton
 Hartlepool
 Lancashire
 North Tyneside
 Redcar and Cleveland
 Sefton
 St Helens
 Stockton-On-Tees
 Wigan